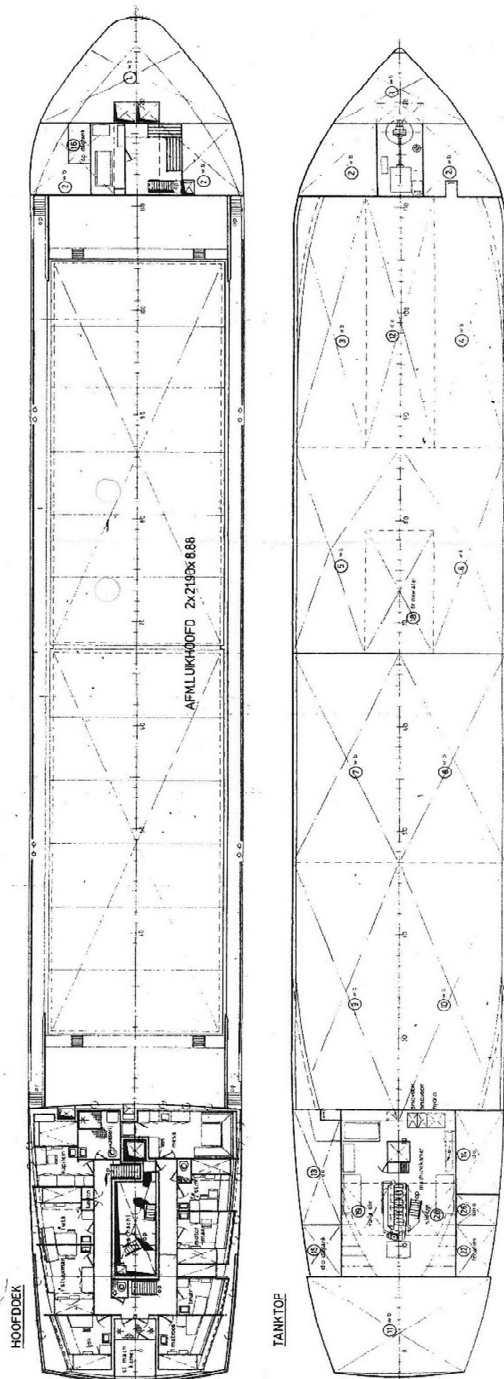
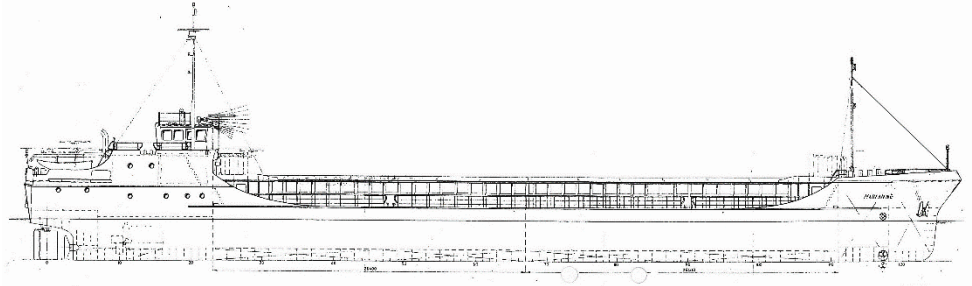


17 rue de l'Ouche Buron  
44300 Nantes, France

Tél. : (+33) 2 40 52 26 01  
Fax : (+33) 2 40 52 23 83

nantes@abcrm-shipping.com  
www.abcrm-shipping.com



**Main engine /  
Motorisation :**

TORK WERKSPoor Diesel  
6FHD 240, 772 kW, 1050 CV,  
793 RPM, 6 cylinders

**Gen sets /  
Générateurs :**

3 gen sets, 53 kW each

**Fuel specification :**

MGO

**Bow thrusters /  
Propulseurs d'étrave :**

Yes

**Speed / Vitesse :**

abt 10 knots

**Hatchcovers type :**

Piggy-back

**Holds / Cales :**

- 1) 26,40 x 10,986 x 5,485 m
- 2) 26,40 x 10,986 x 5,485 m

**Hatchcovers /  
Panneaux de cale :**

- 1) 21,90 x 8,88 m
- 2) 21,90 x 8,88 m

